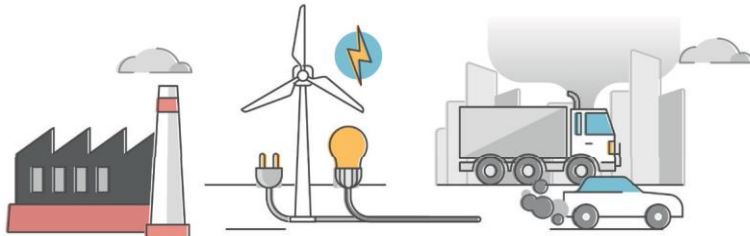


**The SBTi has defined 3 scopes to distinguish sources of GHG emissions**



**SCOPE 1**

Direct emissions linked to production activities

**SCOPE 2**

Indirect emissions linked to electricity, heat or steam production brought in for company operations

**SCOPE 3**

Other emissions indirectly produced by the company's activities such as transport to customers or supply of raw materials (beets, wheat, etc.)